

**GENERAL LAND USE MAP – Updated to November 27, 2018.**

The general land use designations depicted on this map are based on the Lougheed Community Plan including all plan amendments and rezoning approvals adopted by Council. Site specific land uses, development guidelines, desired assemblies and road dedications are further defined by the Community Plan, Burnaby Zoning Bylaw, Comprehensive Development Plans and other City plans, policies, guidelines and bylaws.

**DISCLAIMER OF USE:**

City of Burnaby Community Plans and general land use maps are provided as a public service. Community Plans are adopted by Council as a policy guideline for consideration of specific rezoning development applications. Community Plans and general land use designations are subject to change and amendment by Council.

Users of this information should verify all property and zoning information with written confirmation from the Burnaby Planning and Building Department. The City of Burnaby does not warrant the accuracy of information shown in this General Land Use Map and accepts no responsibility for any damages suffered by any person as a result of decisions made, or actions based on informational content.



PLANNING & BUILDING DEPARTMENT

**Community Plan Information**

For more Community Plan Information or site specific zoning information, please contact us:

**City of Burnaby  
Planning and Building Department  
4949 Canada Way  
Burnaby, BC V5G 1M2**

Telephone: 604-294-7400  
Fax: 604-294-7220  
Email: [planning@burnaby.ca](mailto:planning@burnaby.ca)

Or visit the Community Plan section on our website: [www.burnaby.ca](http://www.burnaby.ca)

# Lougheed

## General Land Use Map



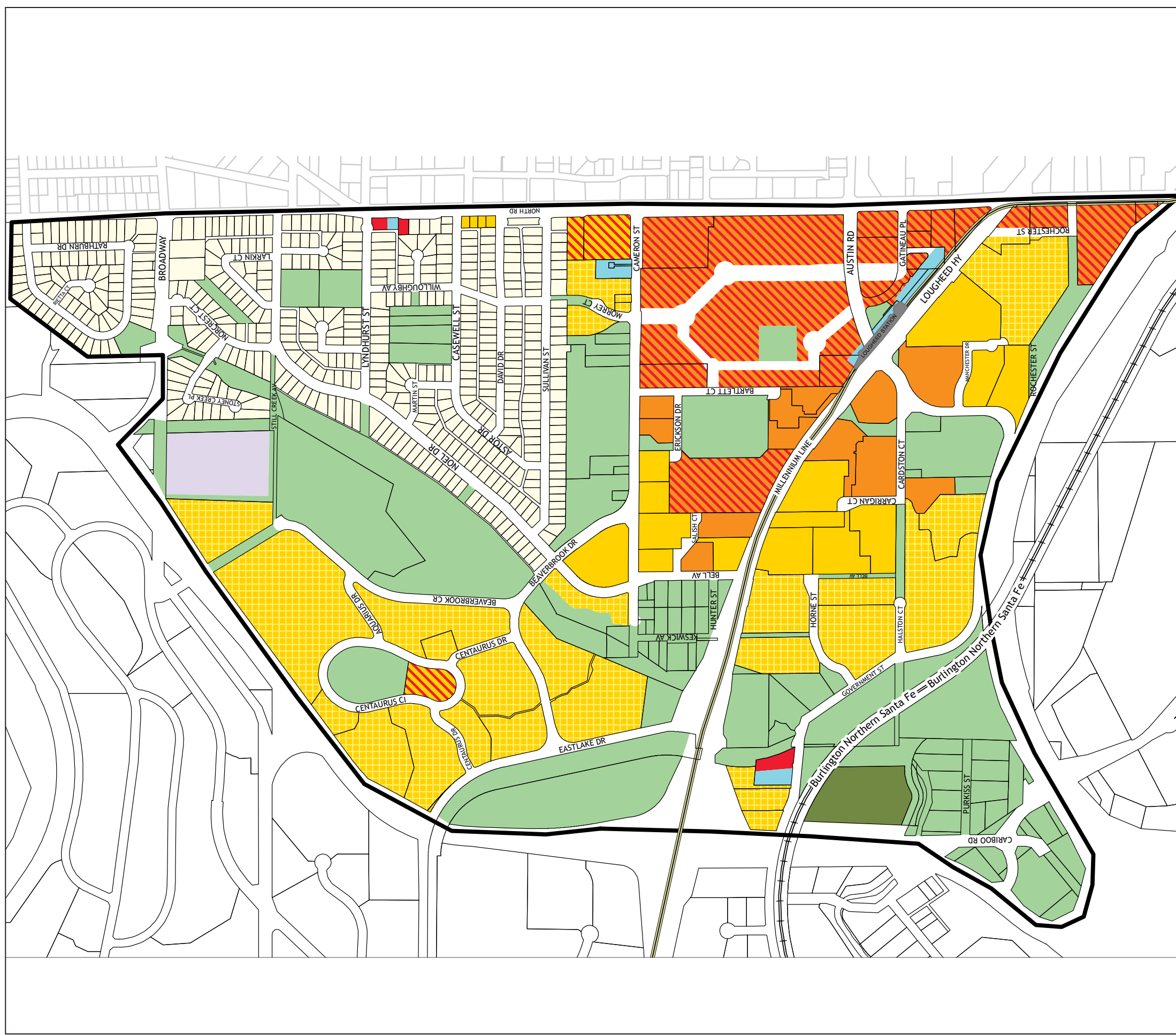
LOUGHEED is designated in Burnaby’s Official Community Plan as a town centre serving the northeast quadrant of the city. The Lougheed community plan was adopted by Council on 1997 June 23.



PLANNING & BUILDING DEPARTMENT

**Community Plan Information**

**Updated to November 27, 2018.**



General Land Use Designation Key

- Single and Two Family Residential
- Medium Density Multiple Family Residential
- Low or Medium Multiple Family Residential
- High Density Multiple Family Residential
- Medium Density Mixed Use
- High Density Mixed Use
- Commercial
- Industrial
- Institutional
- Park and Public Use/Public School
- Recreational Vehicle Park



PLANNING & BUILDING DEPARTMENT

