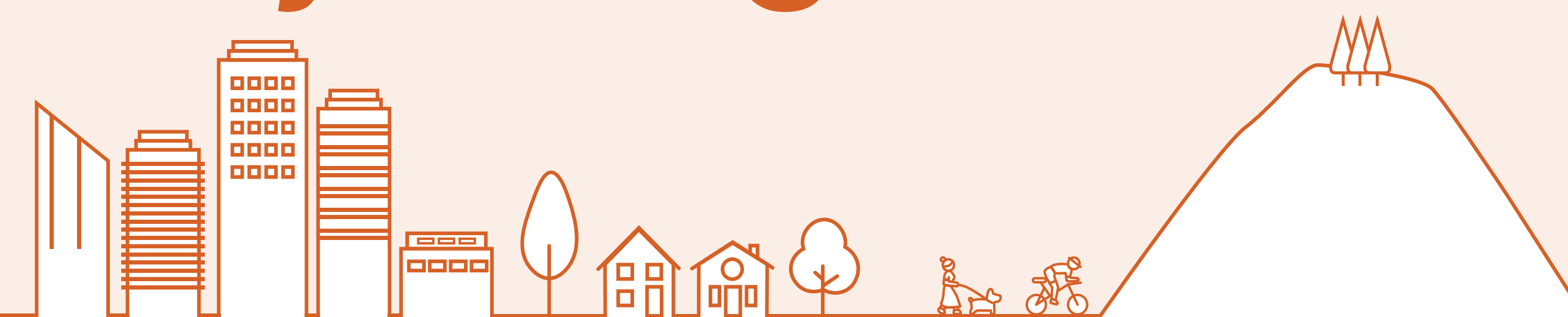


Burnaby 2050

planning our city together

How has Burnaby changed?



Our population and number of jobs are growing.

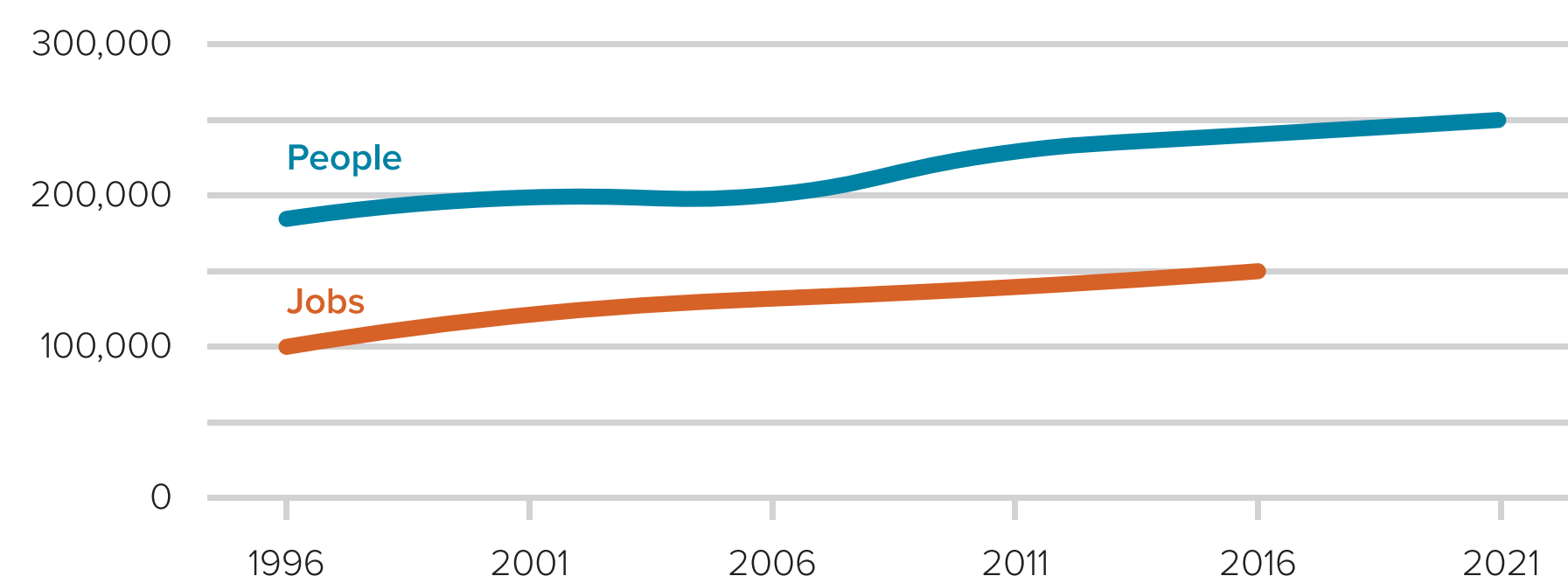


↑ The city's population has increased steadily over the past 25 years by nearly 70,000 from 179,200 in 1996 to 249,100 in 2021.



↑ The number of jobs has increased by 42,000 between 1996 and 2016, from 106,200 in 1996 to 148,000 in 2016. (Note: 2021 numbers are not yet available).

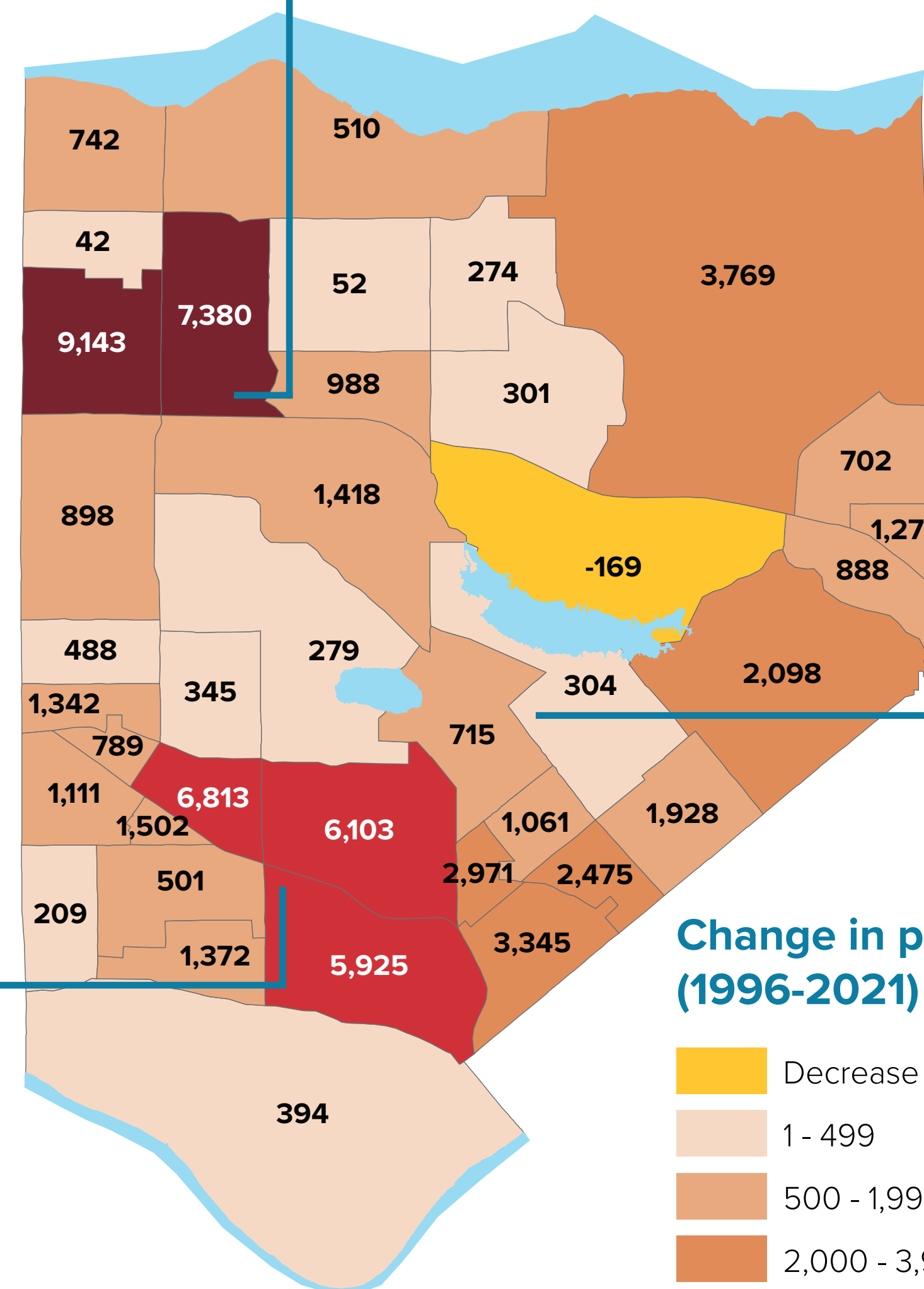
Population and job growth (1996-2021)



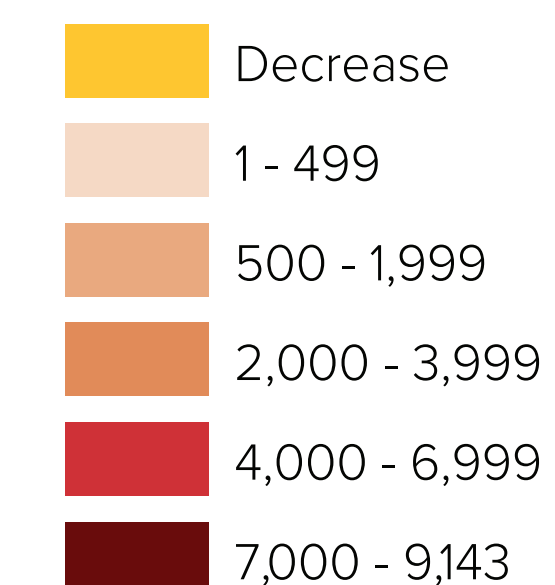
Brentwood 1995 (left) and 2021 (right)



Royal Oak 1995 (top) and 2021 (bottom)



Change in population (1996-2021)



Where are the 70,000 new residents living?

Some areas of the city have grown faster than others. The largest increases in population have been around town centres and on Burnaby Mountain. In addition, areas east of Royal Oak have also seen a dramatic increase in population.

Some parts of the city have seen either little or no increase in population, particularly single family areas of north and central Burnaby.



Single family area (central Burnaby) 1995



Single family area (central Burnaby) 2021

