

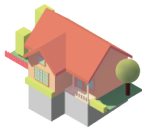
Small-Scale Multi-Unit Housing Options

Single-family homes and duplexes

Single-family dwelling



Single-family dwelling with secondary suite



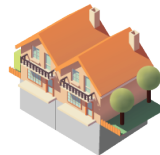
Duplex



Duplex with 1 secondary suite



Duplex with 2 secondary suites

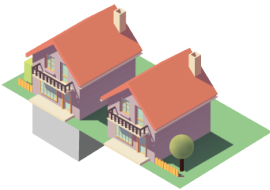


Two single-family homes on a lot

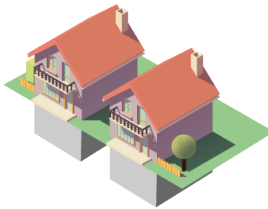
Two single-family dwellings



Two single-family dwellings with 1 secondary suite



Two single-family dwellings with 2 secondary suites



Duplex with 1 single-family dwelling
(Total: 3 units)



Duplex with secondary suites and 1 single-family dwelling
(Total: 5 units)



Duplex with secondary suites and 1 single-family dwelling with secondary suite
(Total: 6 units)



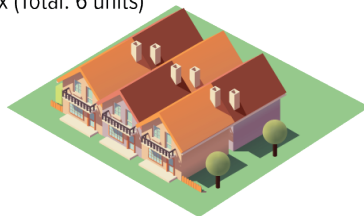
Multiplexes

Buildings with 3 or more primary units

Triplex (Total: 3 units)

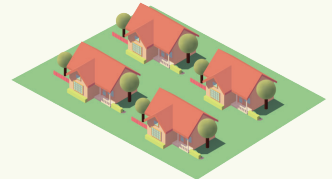


Multiplex (Total: 6 units)

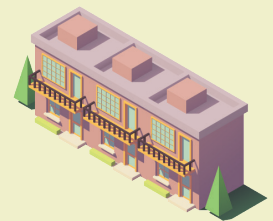


Cottage courts or cottage clusters

Multiple single-family homes on the same lot



Rowhouses



Part 3 buildings exceeding 3 storeys above grade or greater than 600m²



Apartment style buildings with common underground parking

