

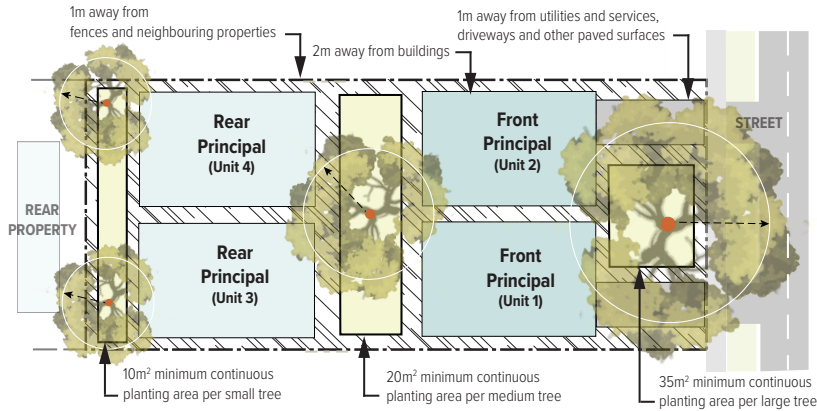
# R1 Development Info Guide

## Trees and Landscape

The design and placement of building should prioritize the protection and preservation of trees in accordance with the City of Burnaby Tree Bylaw 10482C.

### Replacement Trees | Tree size and where to plant

Example: Example: Siting trees and planting areas for 4 principal dwellings

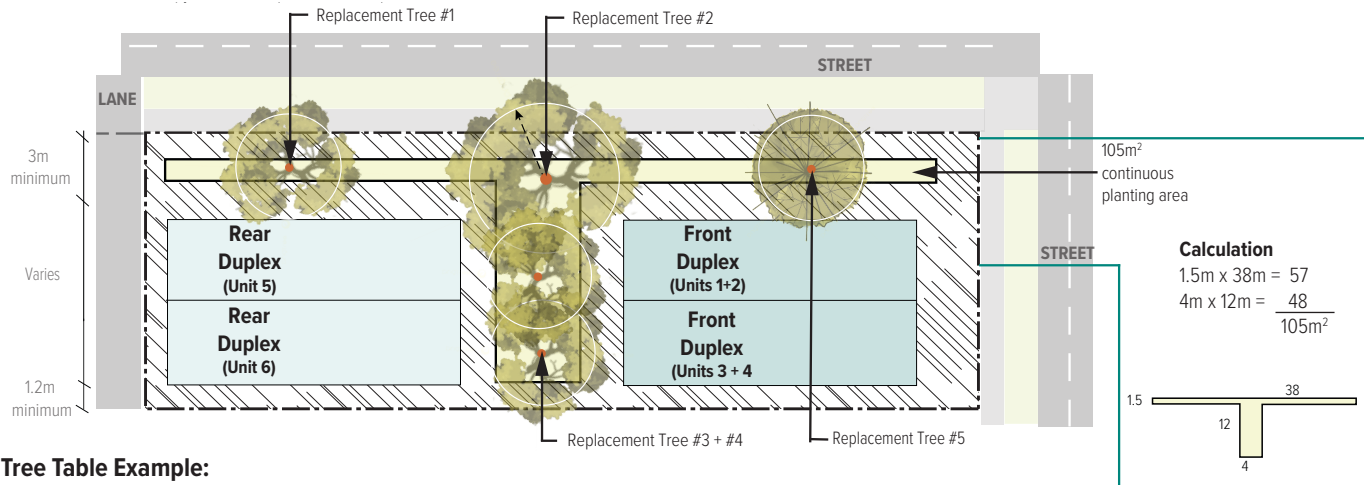


### Site Plan Requirements | Landscape and tree info

Example: Front and rear duplex (12.5m x 40m)

Tree requirements: 5 replacement trees (1 conifer, 3 small deciduous, 1 medium deciduous)

Mature canopy cover: 30% (150/500 = 30%)



### Tree Table Example:

Replacement Tree # - Type, Canopy Size	Species	Nursery Stock Requirements	Notes
1 - Deciduous, small	<i>Cornus mas</i> (Cornelian Cherry)	Deciduous 5cm caliper minimum, tree form	Recommended Minimum Continuous Planting Area of 10m <sup>2</sup> per small tree and 20m <sup>2</sup> per medium tree. Planting soil depth of 1m minimum, with mulch donut, no fill accepted. Planting areas to be mulched with shrub and perennial plantings, or sod/seed lawn.
2 - Deciduous, medium	<i>Davidia involucrata</i> (Dove Tree)		
3 - Deciduous, small	<i>Styrax japonica</i> (Snowbell)		
4 - Deciduous, small	<i>Carpinus caroliniana</i> (Hornbeam)		
5 - Deciduous, small	<i>Acer douglasii</i> (Douglas Maple)		
5 - Conifer, small	<i>Picea omorika</i> (Serbian Spruce)	Conifer 2m height minimum, tree form	Recommended Minimum Continuous Planting Area of 10m <sup>2</sup> per tree. Planting soil depth 1m minimum, with mulch ring, no fill accepted. Planting areas to be mulched with shrub and perennial plantings.

Tree Type	Planting Area	Mature Tree Canopy Coverage
Small	10m <sup>2</sup>	25m <sup>2</sup>
Medium	20m <sup>2</sup>	50m <sup>2</sup>
Large	35m <sup>2</sup>	125m <sup>2</sup>

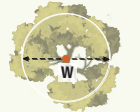
### Example Trees by Canopy Size

Type	Small (<5m)	Medium (5-10m)	Large (>10m)
Conifer	Serbian Spruce Hinoki Cypress Incense Cedar	Shore Pine Bald Cypress Mountain Hemlock	Sitka Spruce Western Yew Noble Fir
Deciduous	Vine Maple Snowbell Dogwood Redbud Magnolia	Dove Tree Black Gum Tree Arbutus Holly Oak	Western Catalpa Beech Tree Garry Oak Yellowwood

# Principal Units ~10-15m wide lots	Mature Tree Canopy per Lot*	Typical Minimum Tree Replacement*
1	40%	Total: 5-6 trees
2	30%	Total: 4 trees
3+	25%	Total: 3 trees

Mature Tree Size (Canopy Width)	Minimum Continuous Planting Area
Small (<5m)	10m <sup>2</sup>
Medium (5-10m)	20m <sup>2</sup>
Large (>10m)	35m <sup>2</sup>

W = Canopy Width



\*Estimate based on City of Burnaby Tree Bylaw 10482C replacement ratios - final amount including cash-in-lieu to be determined by Tree Bylaw Staff

\*\*Letter of Understanding of Works Being Performed from Adjacent Property Owner required - City of Burnaby Trees contact Treeline@burnaby.ca

Please contact [Treeline@burnaby.ca](mailto:Treeline@burnaby.ca) to discuss any trees that may be affected by development prior to submitting your application.