

Understanding Your Property Tax Notice

Did you know that the City of Burnaby is required to collect property taxes on behalf of the Province and other authorities? The property tax notice breaks down where your property tax dollars go in detail.

The total 2026 property tax increase depends on a combination of factors.

1. How much your property assessment has changed in relation to the average assessment for similar properties in Burnaby
2. The City of Burnaby's tax rate increase
3. Other taxing authorities' rate increases

Additional messages

This section provides details specific to properties under the deferment program, those with mortgage companies responsible for paying the bill, or properties with outstanding delinquent taxes.

City of Burnaby taxes

The top section of the notice shows how the City's portion of property taxes collected is used to provide public services. The majority goes towards funding community safety, parks, recreation, culture and library, and engineering services including maintenance of roads and infrastructure. This section also includes tax collected for Growth Infrastructure Investment, introduced in 2025 to address provincial funding rules for amenities and infrastructure. Where applicable, Local Area Service or Business Improvement Charges may also apply. These taxes are set by your City Council.

- » **2026 is the last year that the Sewer Parcel Tax will be collected on this notice. Starting in January 2027, this charge will be moved to your utility notice.**
- » The 2026 tax rate increase for this section on your notice is 2.9% and 1.9% for the Growth Infrastructure Investment, for a combined rate increase of 4.8%.

Residual home owner grant and current year taxes

This section explains the balance of any available home owner grant after it has been used to offset school taxes.

Total outstanding taxes

This section includes any prepayments and adjustments. The total outstanding taxes line shows the net amount payable based on the grant status.

Special messages

This section provides information for customers who are on the prepayment debit plan.

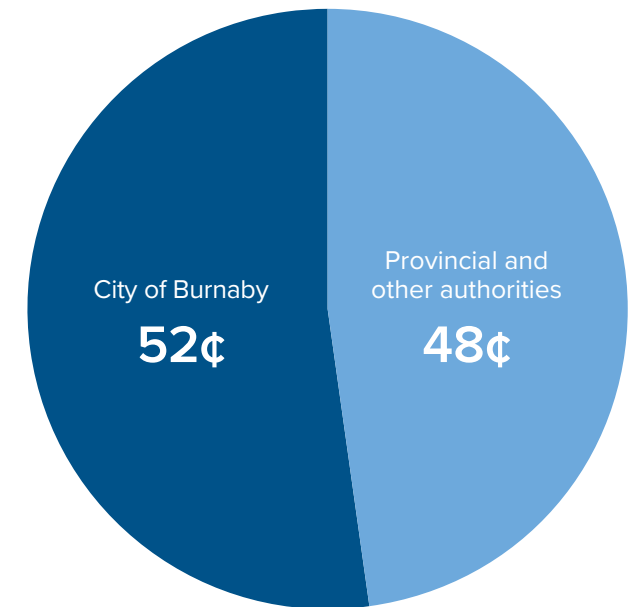
Other authority taxes and school taxes

Provincial legislation requires Burnaby to collect taxes for services provided by other taxing authorities including the Province of BC (school tax), TransLink, Metro Vancouver, BC Assessment and the Municipal Finance Authority. All funds collected on their behalf are remitted to the taxing authority after the due date. **City council has no control over amounts levied.**

- » **Translink** funds road and transit operations within the Metro Vancouver region from its share of the motor fuel tax, transit fares and property taxes collected in each of the region's 21 municipalities.
- » **Metro Vancouver Regional District** taxes are remitted for regional services such as water provision, sanitary sewer removal and treatment, solid waste processing, air quality and regional parks.
- » **Municipal Finance Authority** finances municipal infrastructure and provides other low-cost and reliable financial solutions.
- » **BC Assessment** develops and maintains real property assessments throughout British Columbia in addition to providing real property information.
- » **Provincial School Levy** is remitted to the Province of BC. Taxes collected help fund the cost of providing education in BC.
- » **Less Home Owner Grant (HOG)** If eligible, the notice will reflect a credit in Column B for the regular grant (up to \$570). An additional grant of \$275 is available for a total grant of \$845, as shown in Column C for eligible properties. Eligible homeowners must apply for the HOG every year. For eligibility criteria and to submit the HOG visit Gov.bc.ca/HomeOwnerGrant.

- » **Additional School Taxes** apply to most high-valued residential properties in the province, including detached homes, stratified condominium or townhouse units and most residential class vacant land. The additional school tax rate applies only to the portion of the property valued over \$3 million. This rate does not apply to the first \$3 million in value. This line will be visible only on eligible properties.
- » **School Tax Credit** is a provincial program which reduces school taxes for farm property. This line will only be visible on eligible properties.

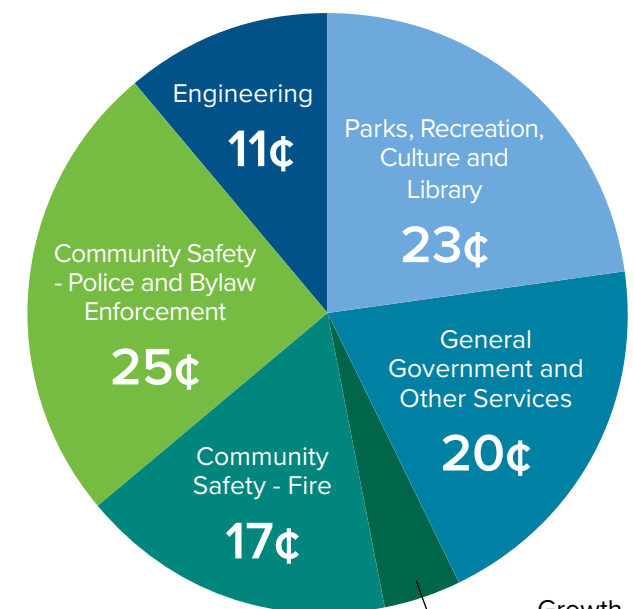
Where your property tax dollars go



(cents per taxing authority)

How the City's portion of property taxes are spent

(2026 operating budget)



Growth Infrastructure Investment

4¢

Based on an average residential dwelling with an assessed value of \$1,268,705.87